



Energy Solutions
INTERNATIONAL, INC.

LX
GOLD

LED TROFFER KIT / FIXTURE

TYPE	PROJECT NAME	DATE

FEATURES

- Energy efficient replacement from fluorescent technology
- 120,000 hr + L70
- Seoul Semiconductor LEDs
- Philips Xitanium / Sylvania Optotronic LED Drivers
- Dimming options available upon request
- Wide range of lumen and wattage packages available
- 140 lumen per watt delivered / 84+ CRI
- Color Tuning options available
- lot - Ready

TECHNICAL INFORMATION

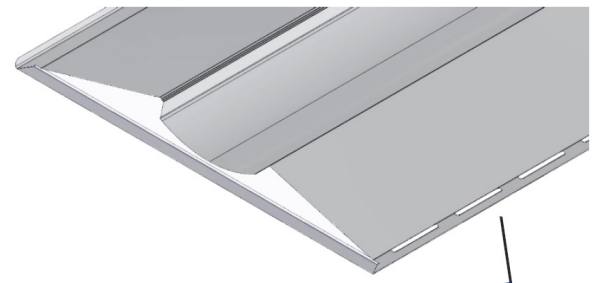
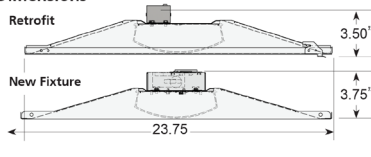
- **Housing:** All aluminum construction minimizes weight and maximizes thermal performance of the LED light engine.
- **Finish:** All parts are painted with a matte white paint to provide soft, even illumination.
- **Fixture Mounting:** Fixture is designed for lay-in, recessed applications only.
- **LEDs:** Best efficacy of mid-level power LEDs, 80+ CRI, utilizes aluminum substrate to provide superior thermal management.

INSTALLATION POINTS

RETROFIT INSTRUCTIONS

- The existing door frame must be removed along with all of the existing fluorescent components in the fixture. A hinge rail is inserted between the ceiling grid and fixture housing at each end. The hinge tabs on the retrofit insert are engaged with the slots in the hinge rails. With the insert hanging open, the electrical connection can be made and ground strap installed. The final step is to close the new LED door and secure the latches.

Dimensions

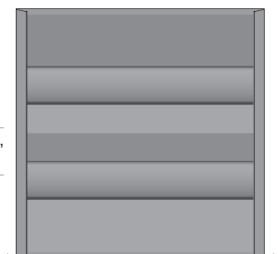
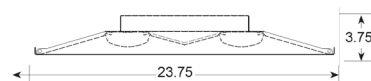


Air Handling on Fixture.

For proper Air Handling on an LX Kit Side Rails are omitted.



Dual Lens option



23.75



MADE IN THE USA

LX 17001



Energy Solutions
INTERNATIONAL, INC.

LX
GOLD

ORDERING INFORMATION

Part Number = Style + Size + Light Engine + Color Temperature + Options
(Example: K-24Lx-F4N2-35 = 2'x4' LX Retrofit Kit with a 32 Watt Light Engine & 3500K LED Boards)

STYLE	SIZE	LIGHT ENGINE	COLOR TEMP.	OPTIONS
K - RETROFIT KIT	22LX - 2' X 2'	L2X6G2 - 16W - 2287 LUMENS	35 - 3500K	D - 0-10V DIMMING
F - FIXTURE		L2X9G2 - 19W - 2661 LUMENS	40 - 4000K	SD - STEP DIM
		L2L2G2 - 22W - 3057 LUMENS	50 - 5000K	LVD - LINE V DIM
		L2L5G2 - 25W - 3454 LUMENS		AH - AIR HANDLING
		L2L9G2 - 29W - 3980 LUMENS		EM - EMERGENCY DRIVER
		L2N2G2 - 32W - 4350 LUMENS		WB - WIDE BODY
		L2N6G2 - 36W - 4863 LUMENS		PA - PRE ASSEMBLED
		L2M0G2 - 40W - 5202 LUMENS		FR - FROSTED LENS
				DL - DUAL LENS

CONTROLS CAPABILITIES

"All products are IoT-Ready!"



OCCUPANCY / VACANCY



GROUPING



DIMMING



DAYLIGHT HARVESTING



SCHEDULING



NETWORKED LIGHTING CONTROLS



MADE IN THE USA

LX 17001